

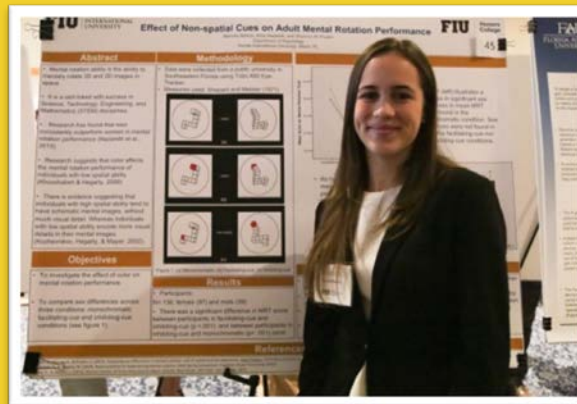
RESEARCH WORKSHOP

**By the OPHA Graduate Assistants
Tiffany Beguiristain & Leila Nojaba**



VALUE OF RESEARCH EXPERIENCE

- Involvement in research shows professional schools
 - You can apply scientific principles in the lab.
- Working in a lab will help make you a competitive applicant.
- Present your work at conferences
- Get published



VALUE OF LAB EXPERIENCE

- Utilize and develop critical thinking skills
- Learn organizational skills
- Develop leadership skills
- Opportunities to publish and attend conferences



STRENGTHENING YOUR APPLICATION

- Original Research under the direction of faculty
- Attend National and International Scientific Conferences
- Publications in Peer Reviewed Scientific Journals
- Develop communication and networking skills



HOW TO FIND RESEARCH EXPERIENCE?



FIU Professors

FIU Research Programs

Summer Research Programs

MARC U*STAR – MINORITY OPPORTUNITIES IN BIOMEDICAL RESEARCH PROGRAMS



- Go to www.mbrs.fiu.edu
- Select tab – **MARC U*STAR**
- Select from drop down menu – **Apply Now!**

Eligibility & Application Requirements

Full-time students seeking degrees in science or engineering, with a GPA of 3.3 or better are invited to apply to the program. U.S. citizen or permanent resident applicants should complete the online application and submit a copy of their complete transcripts (unofficial transcripts acceptable for current FIU students), along with three letters of recommendation addressed to Dr. Ophelia Weeks, MARC U*STAR Program Director, and sent to:

FLORIDA INTERNATIONAL UNIVERSITY

11200 SW 8th St. OE 165
Miami, FL, 33199

Attn. MARC U*STAR Program Coordinator, Amy Reid

The program coordinator must receive these materials by:

- March 1st, 2014

To file a complete application, please submit:

- Online application form (See Below)
- Statement of Purpose (Identify Mentor and Desired Area of Research)
- Three (3) letters of recommendation
- Resume or CV
- Official Transcripts

SUMMER MEDICAL AND DENTAL EDUCATION PROGRAM (SMDEP)

- Go to smdep.org
- For info, click on **Program Sites** tab (shows all participating schools)
- To apply, click the **Apply** tab



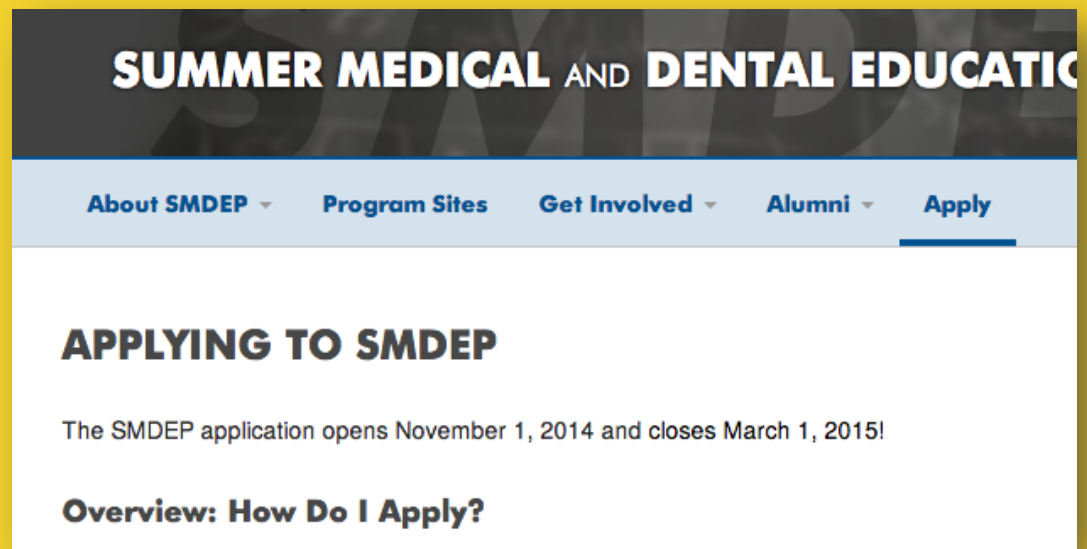
SUMMER MEDICAL AND DENTAL EDUCATION PROGRAM

[About SMDEP](#) [Program Sites](#) [Get Involved](#)

PROGRAM SITES

SMDEP is implemented at 12 program sites across the nation. Participants receive enrichment in the basic sciences and math, clinical experiences, seminars, and a financial planning workshop. Program sites vary in location and when the programs begin. Applicants are encouraged to research each site.

Case Western Reserve University Schools Of



SUMMER MEDICAL AND DENTAL EDUCATION PROGRAM

[About SMDEP](#) [Program Sites](#) [Get Involved](#) [Alumni](#) [Apply](#)

APPLYING TO SMDEP

The SMDEP application opens November 1, 2014 and closes March 1, 2015!

Overview: How Do I Apply?

RESEARCH EXPERIENCE FOR UNDERGRADUATES (REU)

- Go to chemistry.fiu.edu/undergraduate/research-experience-for-undergraduates
- Provides a \$ 5,200 summer stipend
- 10 week program
- Please email REU@fiu.edu for more information



FIND RESEARCH AT FIU

The screenshot shows the top navigation bar of the MBRs RISE website. The menu items are: Home, MARC U*STAR, MBRs RISE, MBRs SCORE, Resources, Useful Links, SRI, and Contact Us. A dropdown menu is open under 'MBRs RISE', listing: About RISE, Eligibility, Faculty Mentors (highlighted with a red arrow), Curricula, Past & Current MBRs RISE Fellows, 2013 MBRs RISE Newsletter, and Apply Now! The background features a molecular structure graphic and the FIU logo.

The screenshot shows the 'Faculty Mentors' page. The navigation bar is the same as in the previous screenshot. Below the header, there are links for 'Collapse all' and 'Expand all'. A red arrow points to the 'Expand all' link. Below these links, the names of faculty members are listed: Agoulnik Alexander Ph.D. (highlighted with a red arrow), Bahrick Lorraine Ph.D., and Barbieri Alejandro Ph.D.

This block shows a detailed view of the 'Faculty Mentors' page content. It includes the 'Collapse all' and 'Expand all' links. Two faculty members are listed with their details:

Agoulnik Alexander Ph.D.
Department: College of Medicine, Department of Human and Molecular Genetics
Rank: Professor
Research Interest: Male and female reproductive tract development, germ cell biology, tumorigenesis, and role played by peptide and steroid hormones in these processes
Office: HLS 1 419B
Office Phone: 305-348-1483
Website: http://medicine.fiu.edu/human_molecular.php?ss=faculty#agoulnik
E-mail: aagoulni@fiu.edu

Bahrick Lorraine Ph.D.
Department: Psychology
Rank: Professor
Research Interest: Intersensory redundancy and the development of perception learning, and memory in human infants
Office: DM 115
Office Phone: 305-348-3988
Website: http://infantlab.fiu.edu/Infant_Lab.htm
E-mail: bahrick@fiu.edu

- Go to www.mbrs.fiu.edu
- Select tab - **MBRS RISE**
- Select from drop down menu – **Faculty Mentors**
- Select **Expand All** to read about each research project